

## FEES

The Registration fee for registration until June 7<sup>th</sup> (Early Bird rate) is € 320 (students € 270). After June 8<sup>th</sup> the regular fee will become due (€ 360, students € 300). These fees include symposium access, program, drinks during breaks, several meals and drinks including conference dinner and traditional must-farmer visit. Details can be found in the Terms and Conditions on the symposium homepage.

## SOCIAL PROGRAMME

Before the official start of the symposium early arrivers may meet at Lake Plesching. Various sports activities are available such as swimming and beergardening. Tables have been reserved at the Seewirt. Typical Austrian food will be served during the conference dinner. A short sightseeing trip into the low mountain area Mühlviertel will bring us to an old-established Mostbauer (must farmer) where a traditional and handmade Jause will be served.

## DATES

|                               |                         |
|-------------------------------|-------------------------|
| Abstract submission:          | May 28 <sup>th</sup>    |
| Hotel reservation:            | May 31 <sup>st</sup>    |
| Deadline poster submission:   | June 4 <sup>th</sup>    |
| Early Bird reduced fee:       | June 8 <sup>th</sup>    |
| <i>Program</i>                |                         |
| Informalreception:            | August 14 <sup>th</sup> |
| Conference starts:            | August 15 <sup>th</sup> |
| Conference ends:              | August 17 <sup>th</sup> |
| Bus Transfer to Prague (ISE): | August 18 <sup>th</sup> |

## HOW TO GET THERE

### By plane

Direct flights to Linz are available from Vienna, Frankfurt, Düsseldorf, Berlin and Munich

### From Blue Danube airport Linz-Hörsching:

Bus No. 601 until Linz Hauptbahnhof (Linz central station)

From Linz central-station, take tram 1 or 2 until Terminal University (30 min.), University and Hotel Sommerhaus are both in walking distance (5 min).

Taxi from airport is approximately 50 €

### By train

Get off at Linz Hauptbahnhof (Linz central station).

From Linz central-station, take tram 1 or 2 until Terminal University (30 min.), University and Hotel Sommerhaus are both in walking distance (5 min).

### By car

Motorway A1 exit Linz  
Motorway A7 towards Prague/Freistadt  
Exit Dornach  
to University  
just straight after 1km on the left side  
to Sommerhaus

At the first junction, turn right into Freistädter Straße

Take a left turn before the motorway bridge  
The Sommerhaus Hotel, is located in Julius-Raab-Straße 10.

Starting at the exit Dornach, you will also find signposts leading to Hotel Sommerhaus.

### By ship

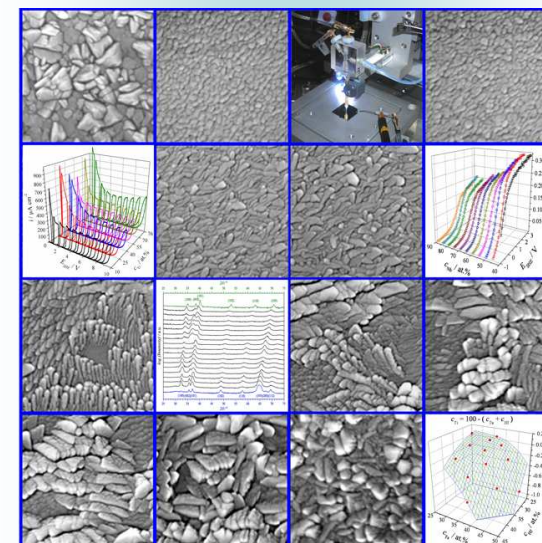
Scenic transfers along the river Danube are available from Passau (7h) and Vienna (15h) or even from Regensburg. Please contact us for more details.



## 2<sup>nd</sup> Announcement & Call for Papers

## EMNT 2012

## 9<sup>th</sup> INTERNATIONAL SYMPOSIUM ON ELECTROCHEMICAL MICRO & NANOSYSTEM TECHNOLOGY



Combinatorial Microelectrochemistry

EMNT 2012

9<sup>th</sup> International Symposium on Electrochemical Micro & Nanosystem Technologies

**Linz, Austria**  
**15-17 August 2012**

## SCOPE

The 9<sup>th</sup> International Symposium on Electrochemical Micro & Nanosystem Technologies will continue the tradition of the eight previous successful symposia. Following the general tendency in science equal emphasis will be put on both microscopic and nanoscopic aspects of electrochemical system technology. The scope of this symposium ranges from fundamental research, over implementation of new techniques up to applied research.

## CALL FOR PAPERS

Special emphasis will be placed on scientific discussion. This will be achieved by a combination of keynote lectures, oral presentations and an oral teaser for each poster. Sufficient time is allotted to informal poster and discussion sessions. Abstracts must be submitted using the template and should be submitted by email to :

[emnt2012@jku.at](mailto:emnt2012@jku.at)

## SCIENTIFIC PROGRAM

- Functional Coatings
- Scanning Probe Techniques
- Electrochemistry of Nanowires and Nanotubes
- Simulation and Modelling
- Nanoenergy
- Nanoanalytics, Electroanalysis and Sensors
- Electrochemistry and Biology
- Electrochemical Micro Machining
- Micro and Nanocorrosion

## LANGUAGE

The official language of the conference is English.

## PUBLICATIONS

Full research papers will be published in a special issue of *Electrochimica Acta*. All papers will be peer reviewed utilizing the normal submission process.

## ACCOMODATION

The symposium will take place at the campus of the Johannes Kepler University in Linz Austria. Accomodation is available in the Sommerhaus which is conveniently located in walking distance (900 m) to the lecture hall. Please see the conference homepage for more details.

## SITE

Linz is the capital of Upper Austria and was the cultural capital of Europe in 2009. Linz is located at the river Danube and only 250 km away from Prague. It can easily be reached by plane, train or car, or even by ship. Direct flights are available from Vienna, Frankfurt, Düsseldorf, Munich and Berlin. Trains connect to Vienna, Salzburg, Munich and Frankfurt. The conference will take place on the campus of the Johannes Kepler University.

## SCIENTIFIC ADVISORY BOARD

A. W. HASSEL, Linz, Austria, CHAIR  
Y. EIN ELI, Haifa, Israel  
H. HABAZAKI, Sapporo, Japan  
T. HOMMA, Tokyo, Japan  
C. KLEBER, Wiener Neustadt, Austria  
P. MARCUS, Paris, France  
A. MICHAELIS, Dresden, Germany  
M. J. SCHÖNING, Jülich, Germany  
U. KÖNIG, Hilden, Germany  
T. OSAKA, Tokyo, Japan  
Y. SHACHAM-DIAM., Tel Aviv, Israel  
W. SCHUHMANN, Bochum, Germany  
M. STRATMANN, Düsseldorf, Germany  
H. TERRYN, Brussels, Belgium

## CORRESPONDENCE

Conference Secretary  
Johannes Kepler University Linz  
Altenberger Str. 69  
A-4040 LINZ, Austria  
E-Mail: [emnt2012@jku.at](mailto:emnt2012@jku.at)  
Phone: + +43 732 2468 8700  
Fax: + +43 732 2468 8905

## SYMPOSIUM HOMEPAGE

[www.jku.at/conferences/emnt2012](http://www.jku.at/conferences/emnt2012)