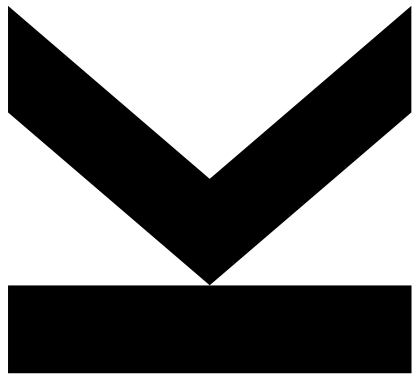


**JKU**

**JOHANNES KEPLER  
UNIVERSITY LINZ**

# Study abroad in the US and beyond with ISEP



Mag.<sup>a</sup> Esther Wöckinger, BA (International Office)

# Covid-19

- Studying abroad during the coronavirus pandemic: **What you need to know**
- **USA**
  - proof of vaccination status prior to boarding an airplane to the United States, effective November 8, 2021

# About ISEP

<https://www.isepstudyabroad.org/>

- Network of more than 100 units in the United States (and 300 worldwide)
- Apply for up to 10 universities
  - ISEP (located in Arlington, USA) places you at one of them

# Destinations

- United States of America
- a selected number of countries around the world (e.g. Malaysia)
  - discuss with the International Office BEFORE applying

# How it works

- **Semester or full year spot** is swapped with student from another ISEP exchange university
  - Accommodation (usually in dorms)
  - Meal plan (min. 10 meals per week or equivalent)
  - No tuition fee

# Benefits of ISEP Exchange

- Open to all degree programs (Bachelor and Master)
- No tuition fees
- Study abroad for a **semester** or an academic **year**
  
- In the US, complement studies with an internship
  - Max. same duration
  - Processing fee \$100

# Program costs and fees

- Similar costs to studying in Linz (accommodation, meals..)
  - 1 semester **2890** EUR/ 2 semesters **5680** EUR (2021/22)
- Program fee
  - US \$ 495 (=US \$ 100 *application* plus US \$ 395 *placement* fee)
- **Compulsory** ISEP health insurance: US \$ 95/ month
- TOEFL fee: ~240 EUR (<http://testing.oead.at/>)
- Visa fees



# Scholarships and financial aid

- Students receiving a study grant
  - **Study grant abroad** (Austrian Study Grant Authority)
    - EUR 327 (or EUR 487 „*Selbsterhalterstipendium*“) per month (USA 2021/22)
- All other students
  - **JKU study abroad scholarship**
  - EUR 900/semester
- ADDITIONALLY, for students with main residence in Upper Austria
  - **IPS scholarship**
    - max. EUR 100 /month
    - plus travel allowance

# Prerequisites at time of application

- Active degree seeking student at the JKU
- **First** semester Bachelor/Diploma students **must not** apply

# Prerequisites at beginning of stay

- Active degree seeking student at the JKU
- Language skills (language of instruction):
  - English: B2 (usually TOEFL score)
  - All other languages: A2/B1
- On Bachelor's level: min. 2 semesters, min. 40 ECTS and „*StEOP*“ successfully completed at JKU
- On Master's level: min. 1 semester and min. 20 ECTS successfully completed at JKU
- Actively taken exams (at least 16 ECTS completed, „*prüfungsaktiv*“ ) in previous two semesters

# Workload abroad

- Compulsory in the US
  - Full workload (equivalent of 30 ECTS per semester at JKU)
    - Usually **five** courses/ semester
    - Gym class does not count
- Full Workload ≠ Fulltime enrollment

# Finding a host university

- <https://www.isepstudyabroad.org/united-states>
  - Law: search for Criminology, International Relations, Political Science, Public Administration, Peace Studies etc.
- Top four unis on the list of ten are crucial
  - Check “Chance of Placement” (*excellent to most competitive*)
- Reports

Trimester are only recommended when studying abroad for an academic year



Studying abroad in the United States with ISEP opens the way to endless opportunities for immersion and exploration at one of over 140 public and private institutions across the country. Experience the varied cultures, landscapes, and people of the U.S., perfect your English skills, strengthen your resume, and become exposed to a range of academic topics and one of the most renowned education systems in the world. Whether you seek its stunning national parks or captivating cities, ISEP has the perfect fit for you.



CONNECT WITH ISEP

## REGIONS OF THE UNITED STATES



### NORTHEAST *Big Cities & New England Charm*

Connecticut, Delaware, New Jersey, New York, Pennsylvania, Vermont  
As the birthplace of U.S. politics, the Northeastern U.S. contains some of the oldest states in the nation and is known for the beauty of its changing seasons.



### SOUTH *The Warm & Expansive American South*

Alabama, Arkansas, Florida, Georgia, Kentucky, Louisiana, Maryland, Mississippi, North Carolina, Tennessee, Virginia  
Rich in history, music, and cuisines, the South offers a unique culture. Explore beaches and bayous, listen to country music, or hike in the beautiful Appalachian mountains.



### MIDWEST *From the Great Lakes to the Great Plains*

Illinois, Indiana, Iowa, Kansas, Minnesota, Missouri, Nebraska, North Dakota, Ohio, South Dakota, Wisconsin  
Enjoy the spectacular plains, lakes, and cities of the Midwest and meet its residents. Known for their friendliness, hospitality, and love for the great outdoors.



### WEST *Discover the Relaxing Pacific Coast, the Mystical Southwest & More*

Alaska, Arizona, California, Colorado, Idaho, Montana, New Mexico, Oklahoma, Oregon, Texas, Utah, Washington, Wyoming  
With star-studded cities, pristine coastline, and iconic natural wonders, the towns and landscapes of the West are as varied as its culture and people.

GET STARTED & EXPLORE PROGRAMS:  
[www.isep.org](http://www.isep.org)

## STUDYING IN THE U.S. WITH ISEP EXCHANGE

With ISEP Exchange, you pay your home university's tuition, housing, and meal costs and rank up to 10 sites across ISEP's network on your application. We then place you at the best option depending on your academic needs and space available. Certain popular locations may have limited space, and while major cities may offer a lot of famous attractions, it may be easier to feel at home in a medium-size city or smaller town.

The two main types of institutions in the U.S. are public or state universities, and private or independent colleges and universities, which can vary greatly by region or state. It may take time to find your best fit, and our team is happy to help!

Regardless of where you land, all of ISEP's programs offer excellent services, high-quality academics, opportunities for immersion in your host community, and an unforgettable life-changing experience.

## FEATURED ISEP EXCHANGE PROGRAMS BY U.S. REGION



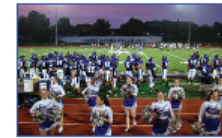
### NORTHEAST University of Vermont in Burlington, VERMONT

The University of Vermont combines faculty-student relationships most commonly found in a small liberal arts college with the resources of a major research institution. UVM is located in Burlington, which is consistently voted one of America's most exciting small cities. UVM's setting in a valley on the shores of Lake Champlain, between the Adirondack and the Green Mountains, inspires visitors and residents.



### SOUTH Warren Wilson College in Asheville, NORTH CAROLINA

Warren Wilson College is a small, nationally recognized, independent liberal arts college in the Blue Ridge Mountain that incorporates experiential learning, community engagement, and sustainable practices. Every student works 10 hours a week, from network maintenance to raising cattle on the college's farm. Nearby Asheville is known for its coffee houses, shops, organic markets, festivals, and extensive outdoor activities.



### MIDWEST Truman State University in Kirksville, MISSOURI

A university that is known for high-quality academic programs, Truman has been ranked as the #1 Public University in the Midwest for the last 20 years. With over 250 student organizations, there is always a lot going on at Truman. The university is best known for offering exceptionally high-quality academic programs and with small classes sizes, and students can get to know highly-regarded professors in their fields.



### WEST University of Wyoming in Laramie, WYOMING

The University of Wyoming offers a world-class education in the small and safe community of Laramie, Wyoming. Founded in 1886, the university welcomes more than 12,000 students from all 50 states and over 90 countries. Wyoming hosts two magnificent national parks, Yellowstone and Grand Teton and the university is less than an hour's drive from trout streams, glacial lakes, rock climbing and skiing areas.

CREATE AN ACCOUNT & START YOUR APPLICATION:  
[www.isep.org/apply](http://www.isep.org/apply)

# Application documents

- Europass CV in English
- Photo (passport size)
- Transcript of Records
- Letter of motivation including preliminary course list/focus and list of host institutions
  - incl. chance of placement
- Planned TOEFL test date

ISEP is just ONE priority: select up to three

# How to find the Chances of placement

- <https://www.isepstudyabroad.org/united-states>
  - „Find a Program“
  - „Details“
  - „Chance of Placement“



# Application and deadlines

1 December  
2021

**Online**  
**application**

If  
nominated:

**TOEFL**

mid-January  
2022 at the  
latest

January 2022

**Info session:**  
ISEP application  
step two

# Contact us

- IO team: <https://www.jku.at/en/international-office/team/>
- Facebook: „[JKU: Austausch 2022/23](#)“

Questions?